

Iniciar Máquina Virtual

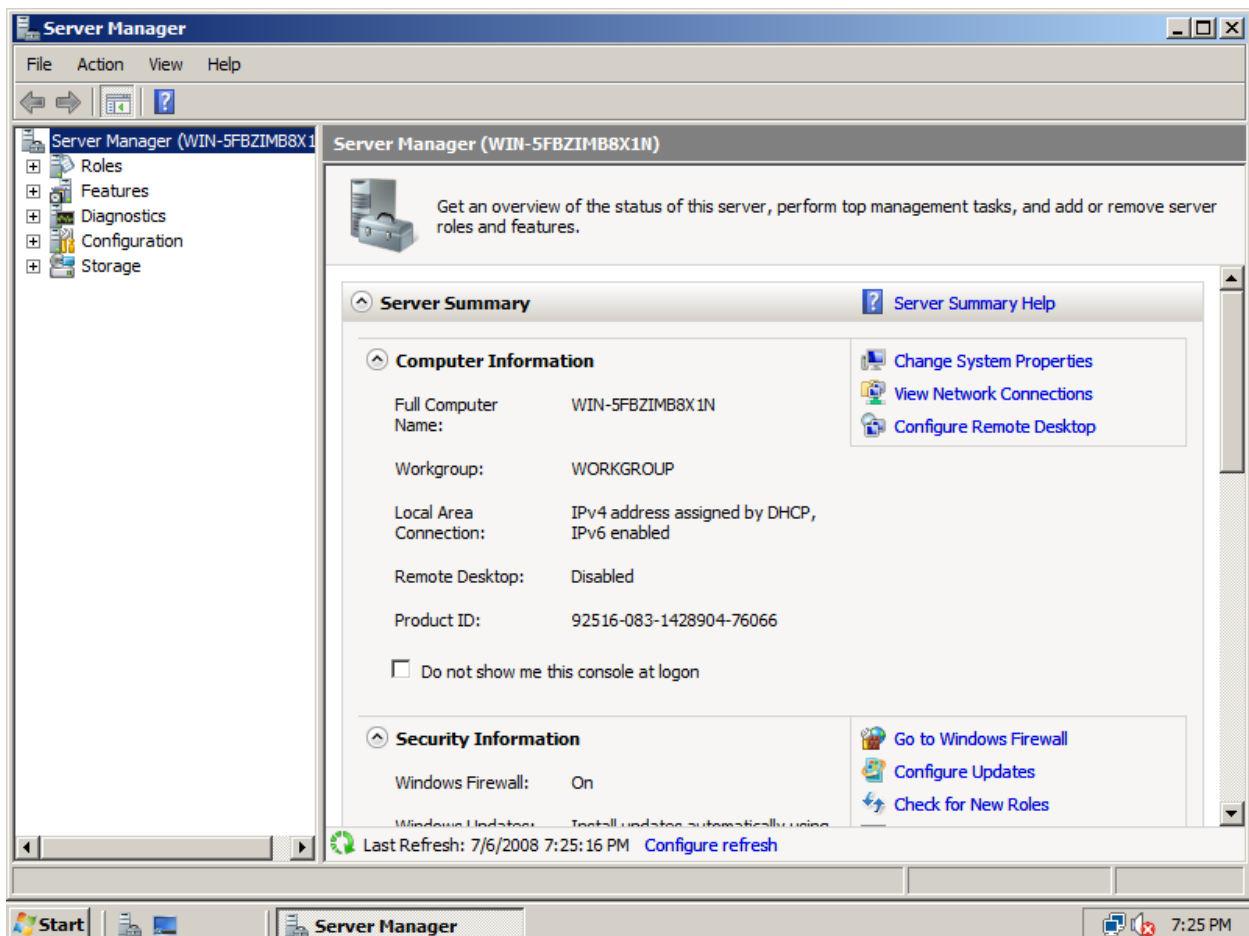
C:\win2008ipV6\win2008ipV6.vmc

Login:

Alt Gr + Del

Usuario: Administrator

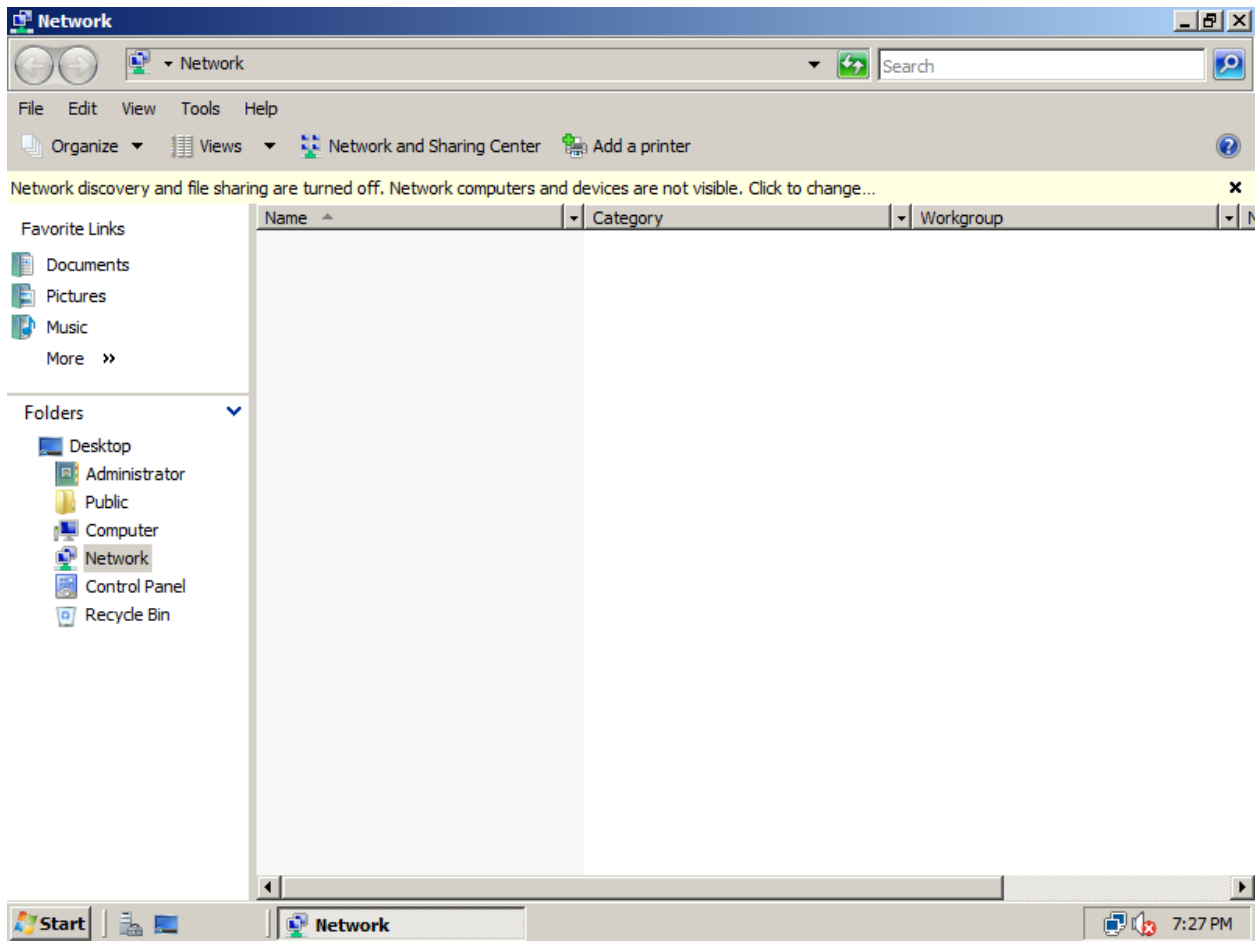
Contraseña: Latu2008



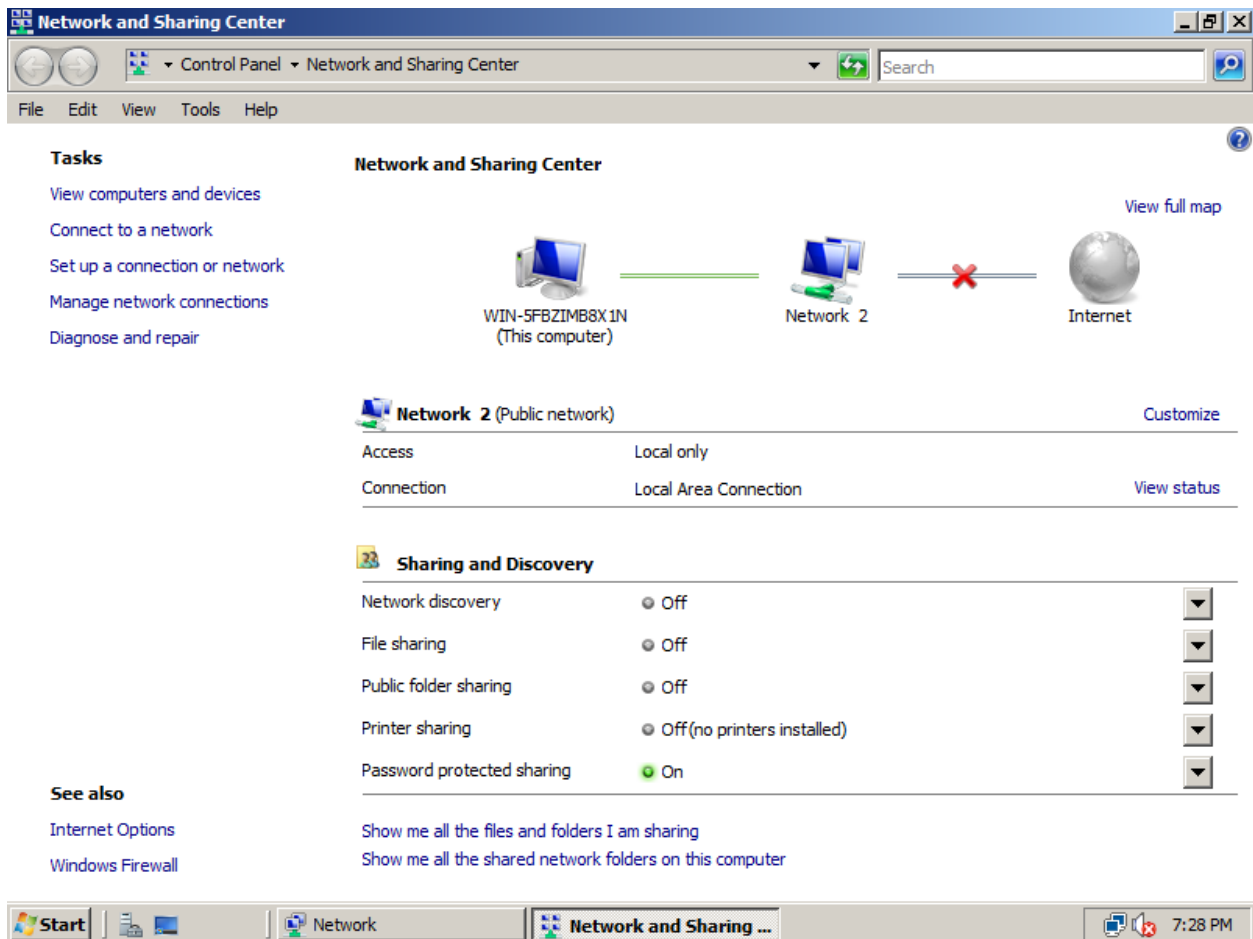
Cierre la herramienta de configuración.

## 1) Configurar Dirección IP

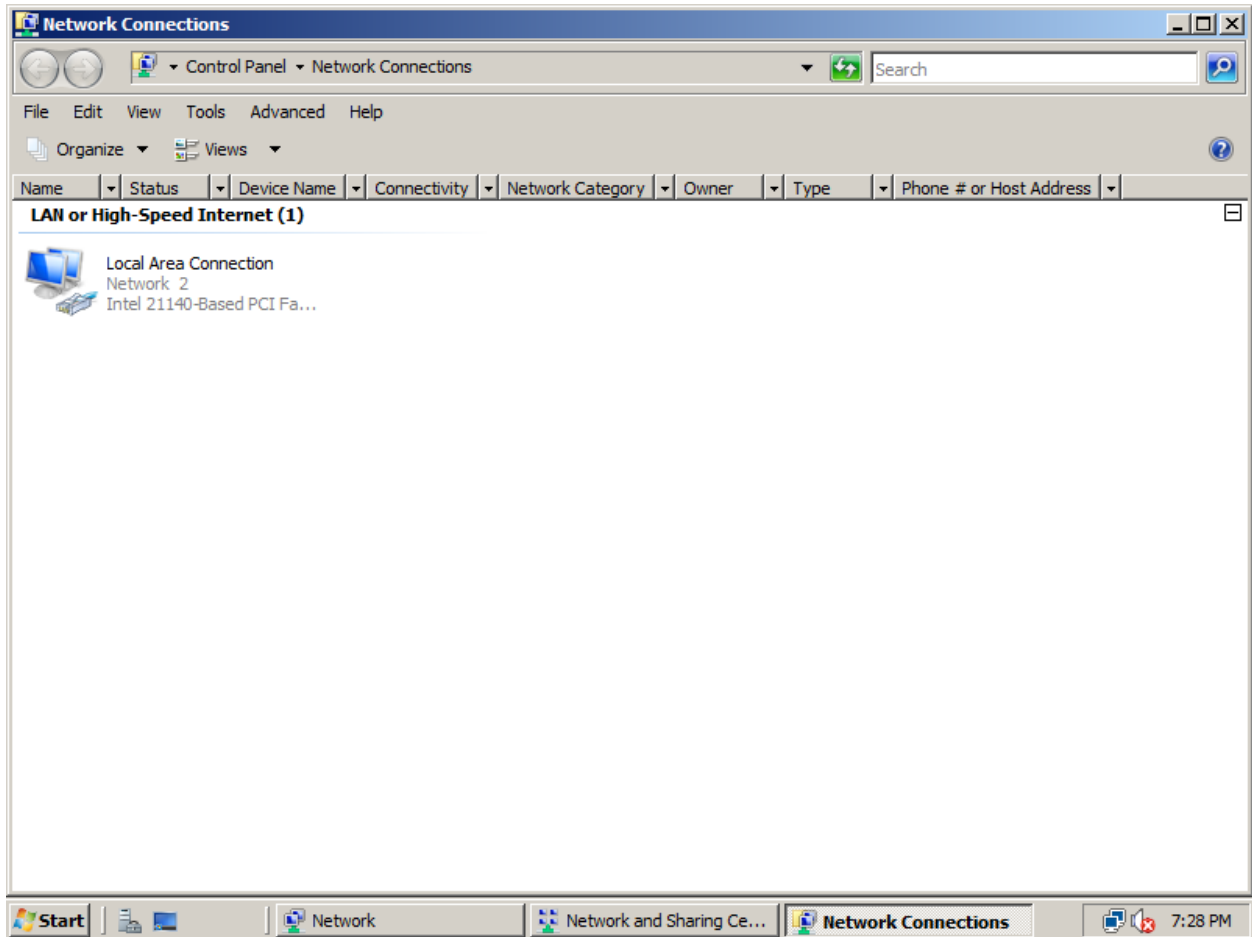
Start / Network



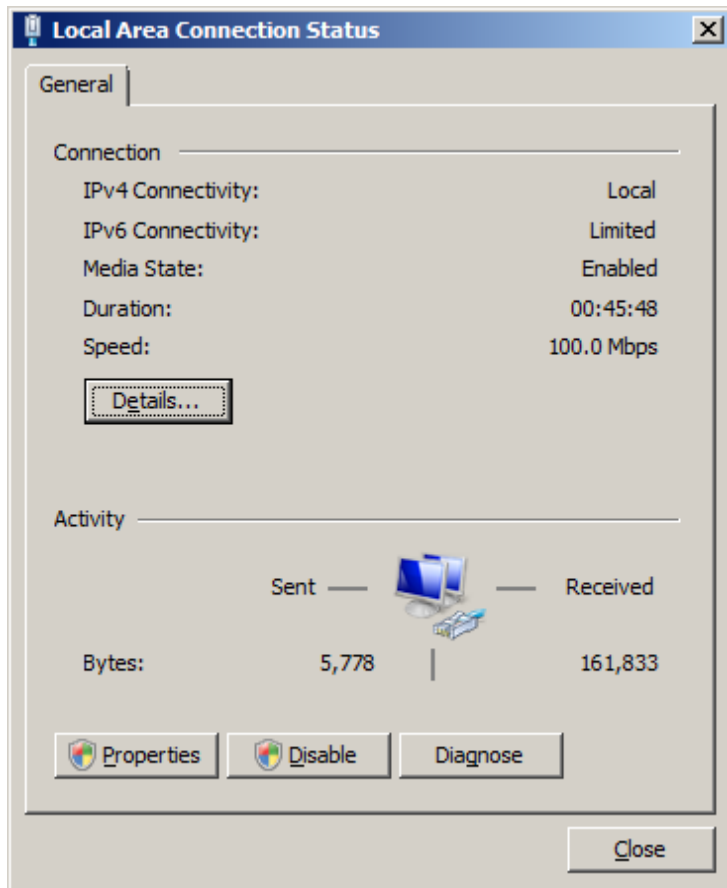
Seleccione: Network & Sharing Center



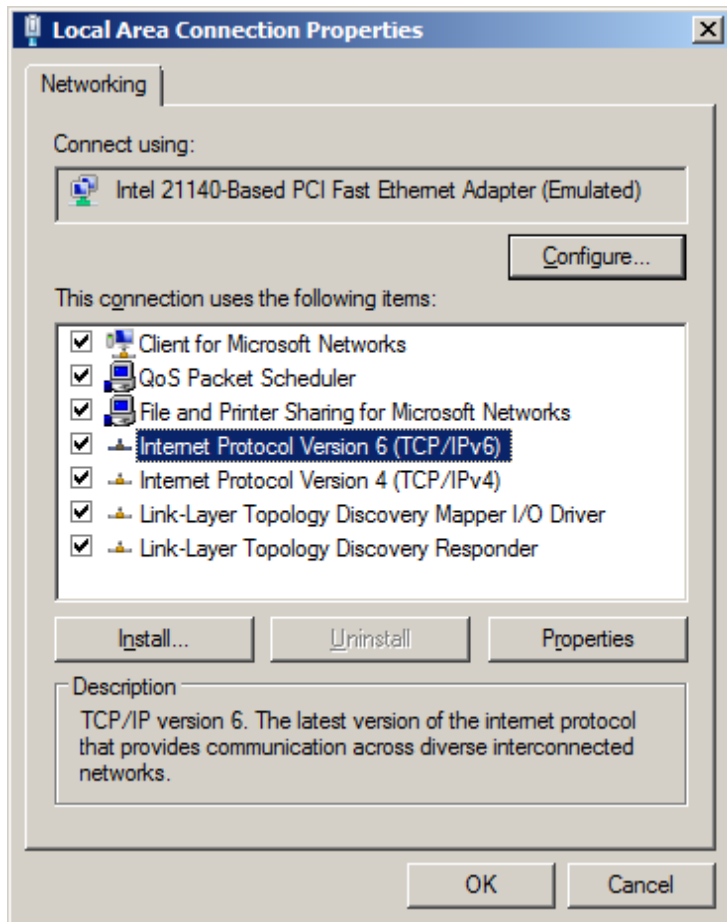
Selezione: Manage Network Connections



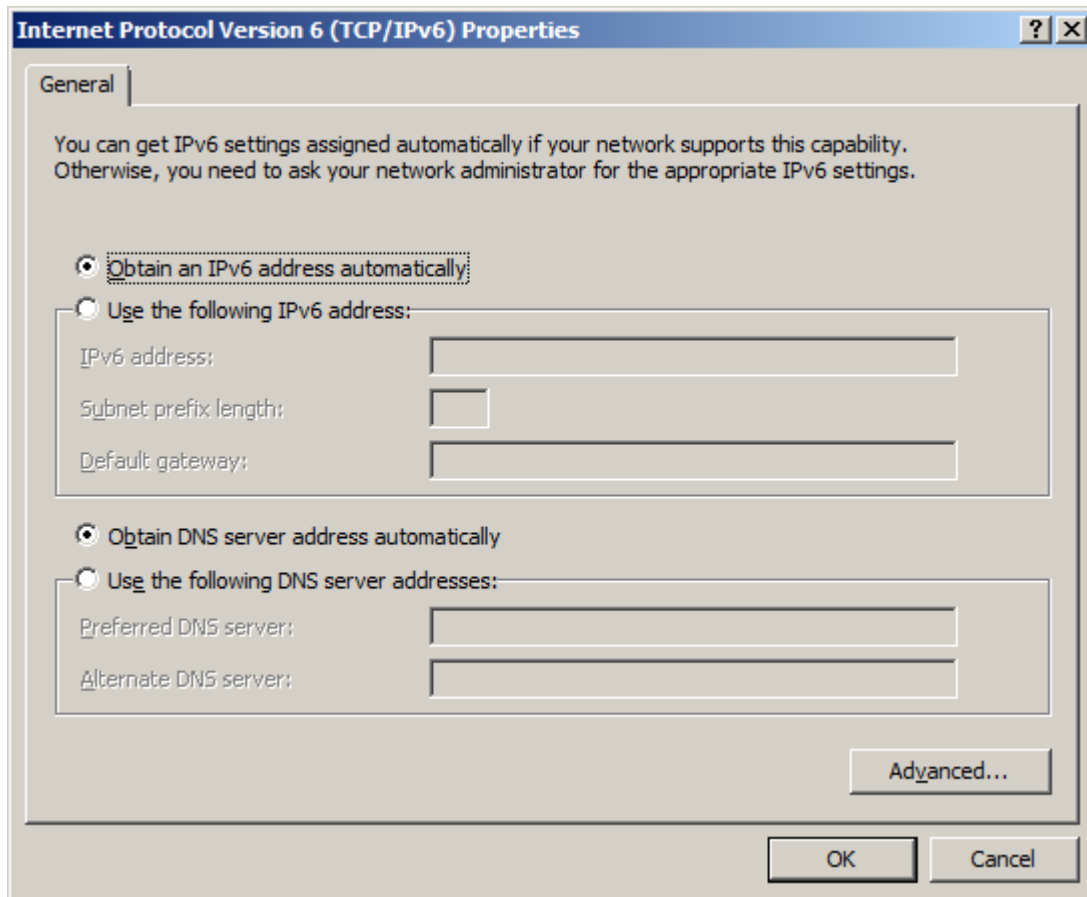
Doble click sobre "local area connection".



Seleccione Propiedades:



Doble click en TCP/IPv6

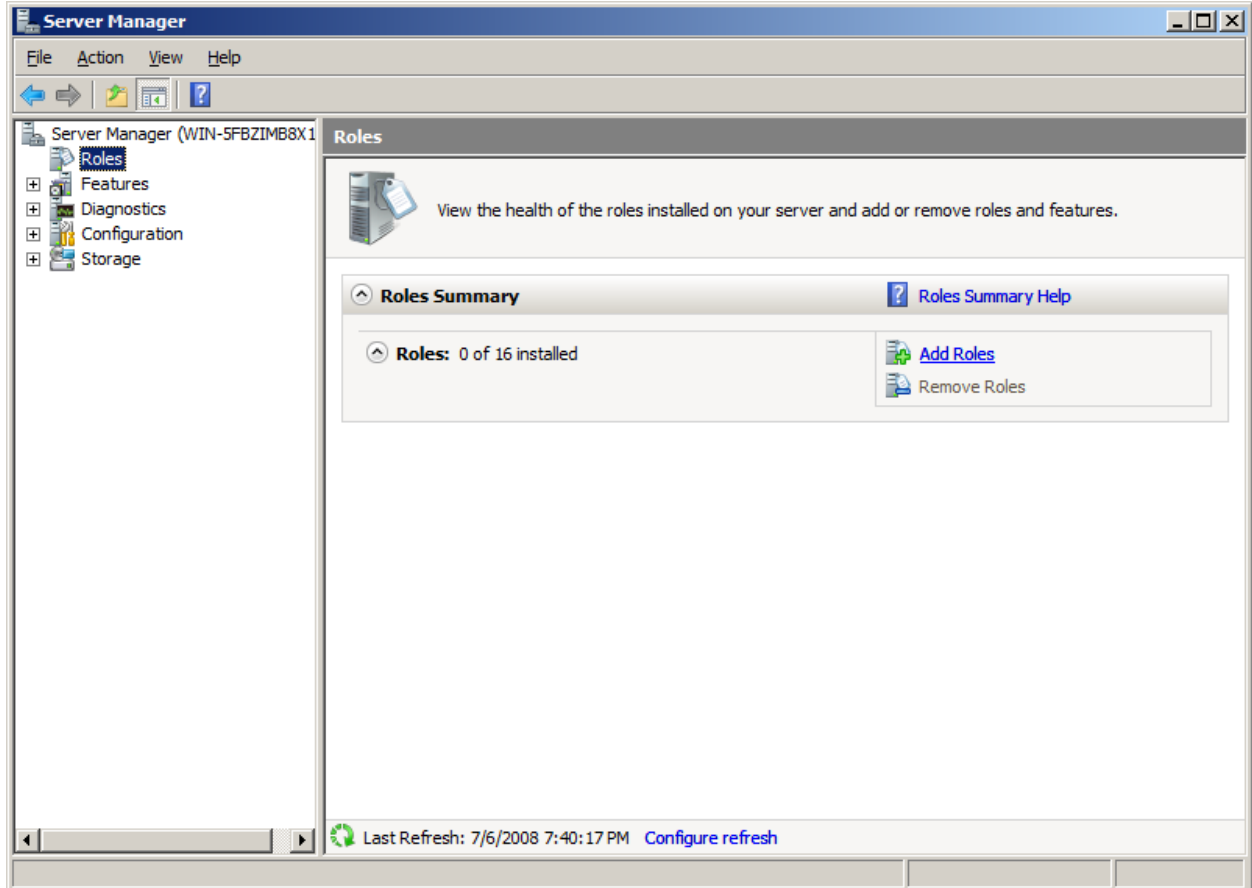


Confirme y cierre todas las ventanas. Abra una ventana de comando y verifique la configuración con ipconfig.

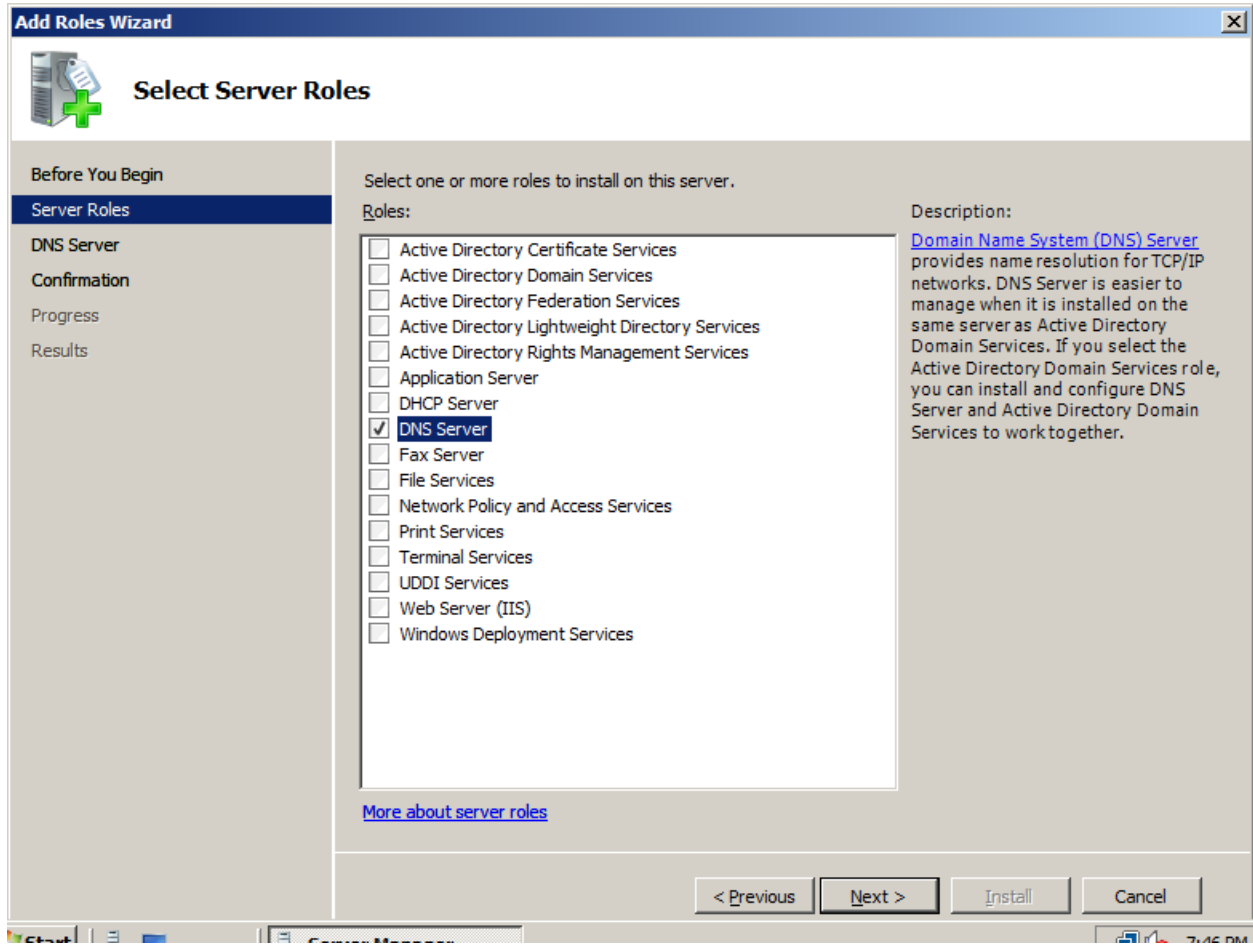
Configure también una dirección IP v4 (10.1.1.1 con DNS 10.1.1.1). Esto se realiza para evitar advertencias en los próximos pasos de configuración de servicios.

## 2) Configurar el servidor DNS

Abra la herramienta "Server Manager" y seleccione Roles, Add Roles.



## Selezione DNS Server



**Add Roles Wizard**

### Select Server Roles

**Before You Begin**

- Server Roles
- DNS Server
- Confirmation
- Progress
- Results

Select one or more roles to install on this server.

Roles:

- Active Directory Certificate Services
- Active Directory Domain Services
- Active Directory Federation Services
- Active Directory Lightweight Directory Services
- Active Directory Rights Management Services
- Application Server
- DHCP Server
- DNS Server**
- Fax Server
- File Services
- Network Policy and Access Services
- Print Services
- Terminal Services
- UDDI Services
- Web Server (IIS)
- Windows Deployment Services

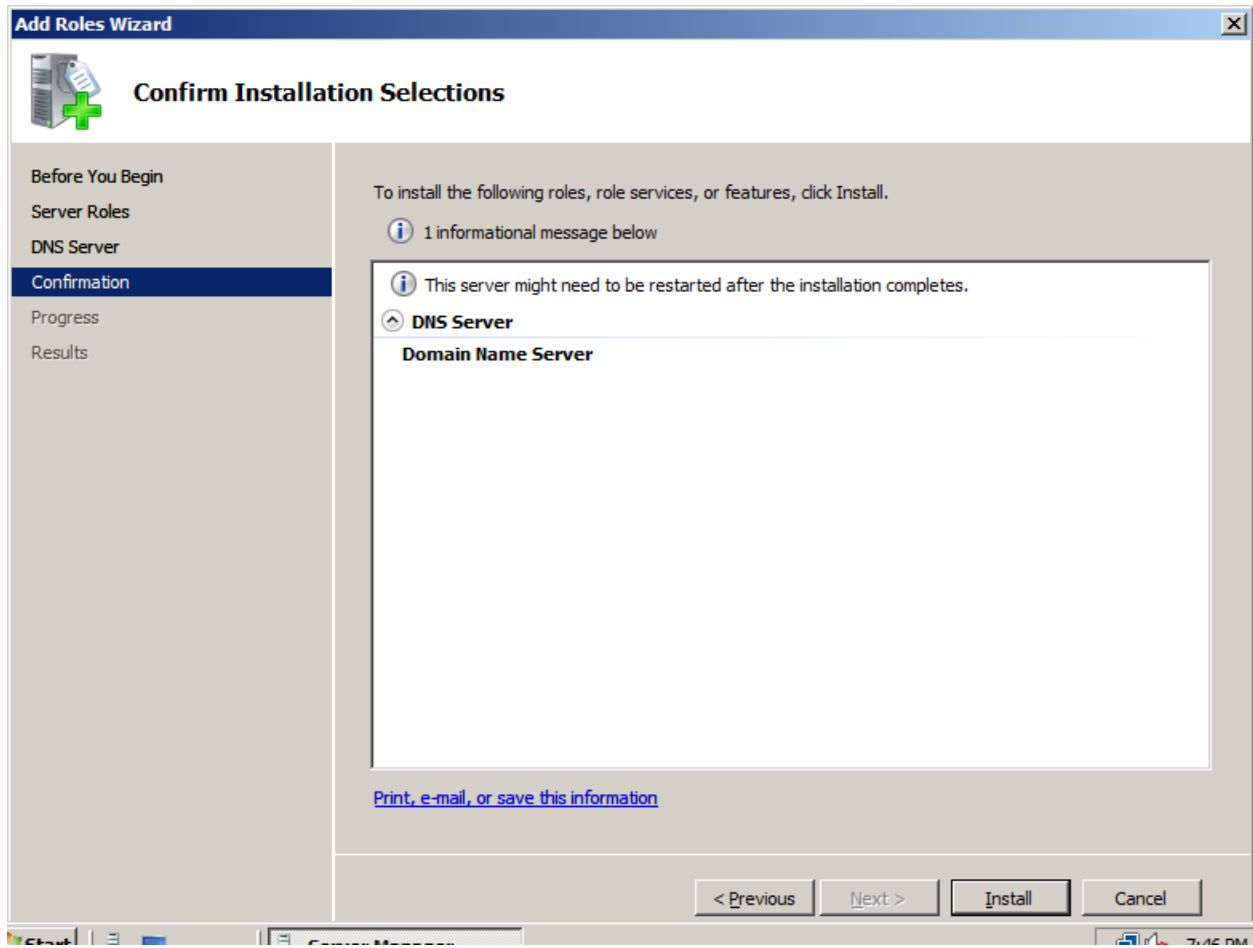
Description:

[Domain Name System \(DNS\) Server](#) provides name resolution for TCP/IP networks. DNS Server is easier to manage when it is installed on the same server as Active Directory Domain Services. If you select the Active Directory Domain Services role, you can install and configure DNS Server and Active Directory Domain Services to work together.

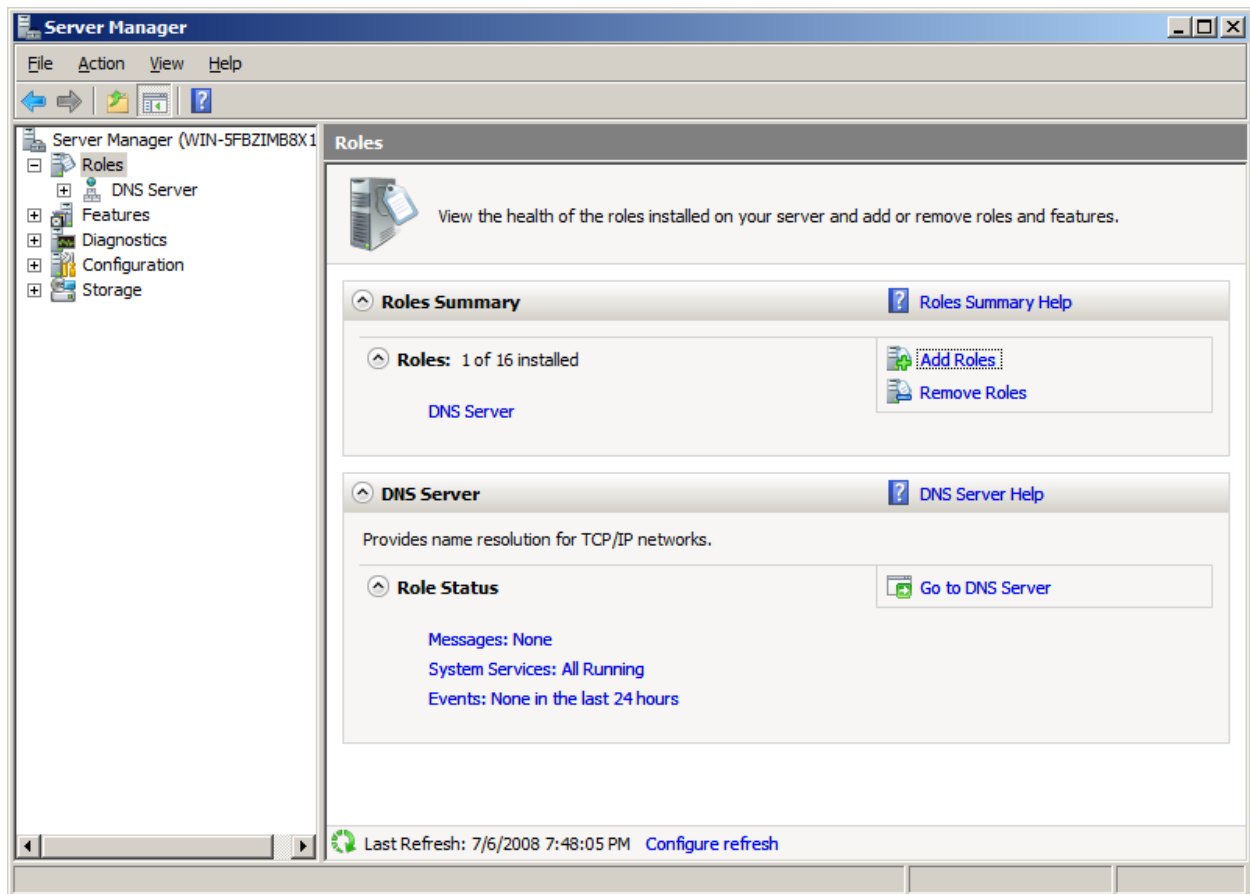
[More about server roles](#)

< Previous    Next >    Install    Cancel

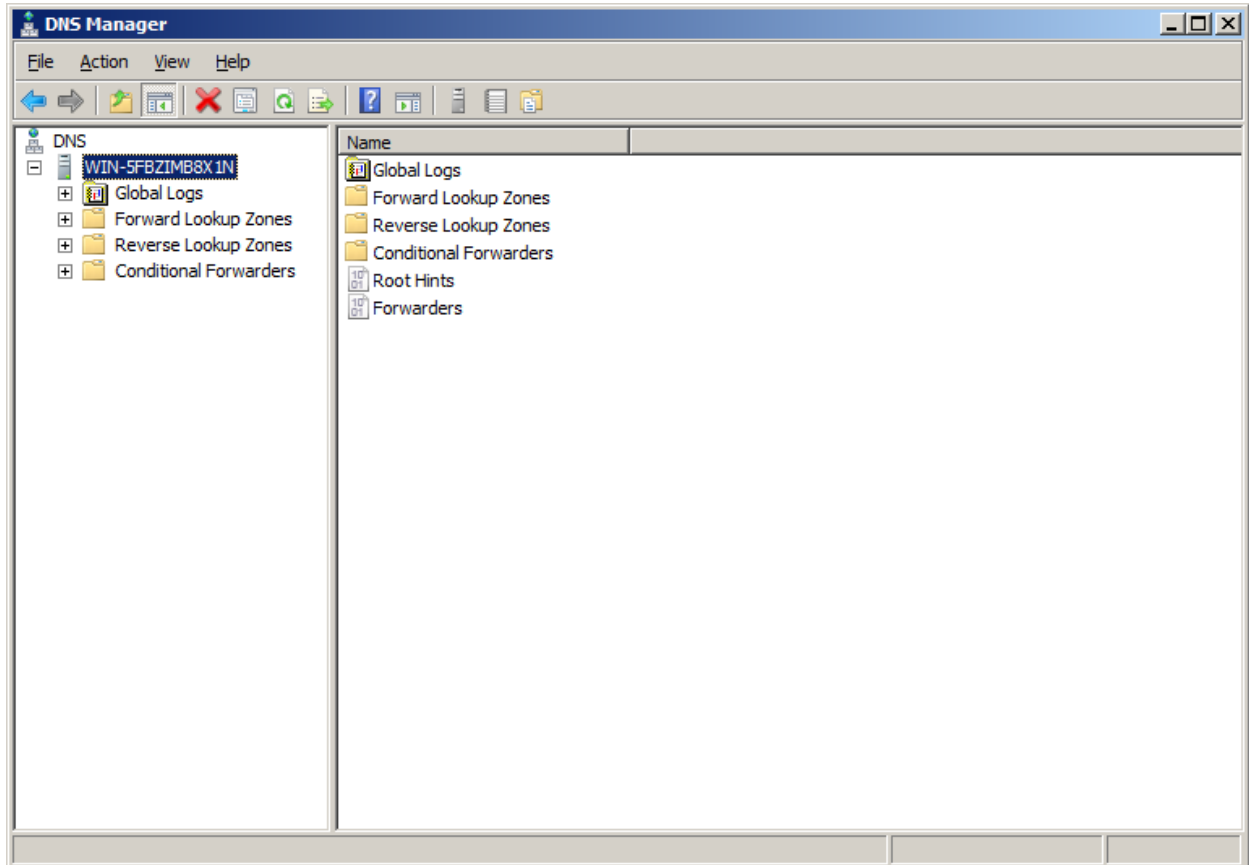
## Selezione Install



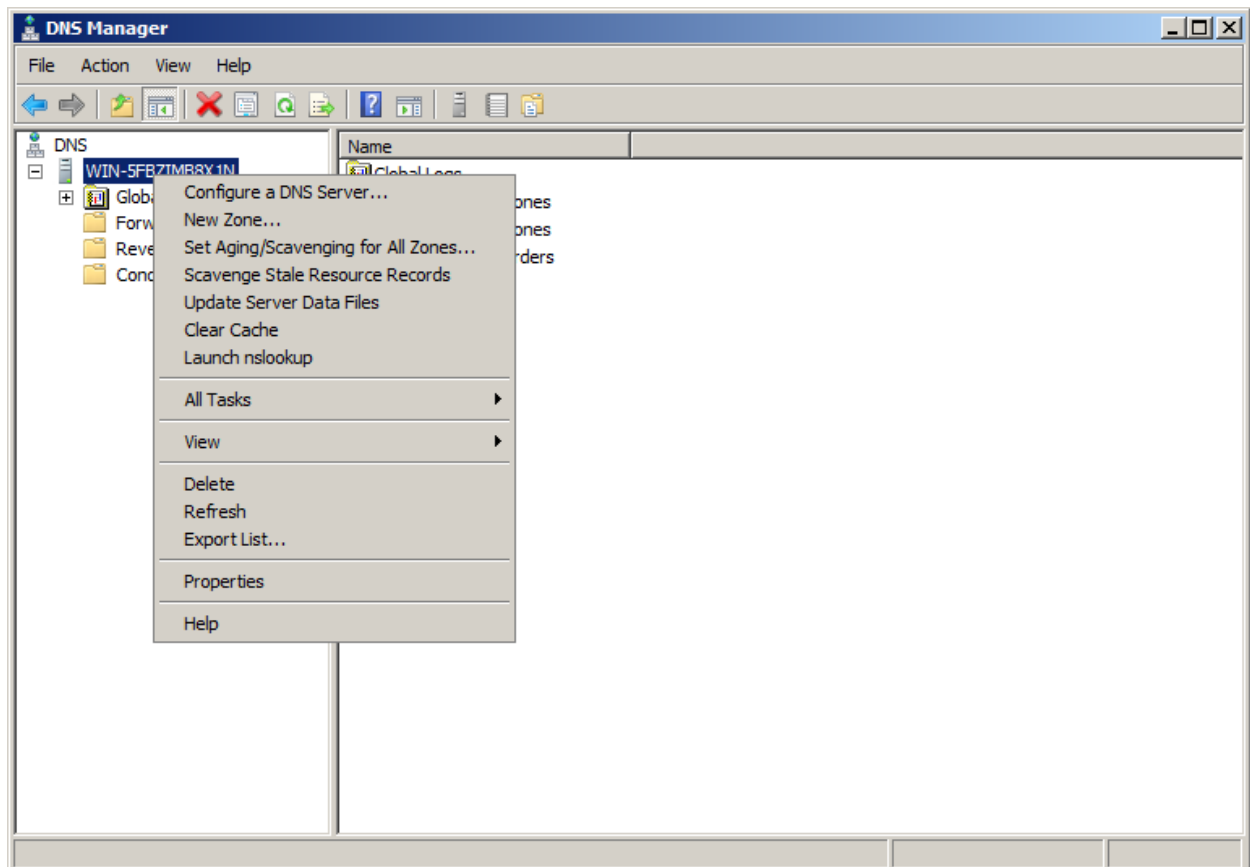
Verifique el estado del servidor DNS: Seleccione "Go to DNS Server"



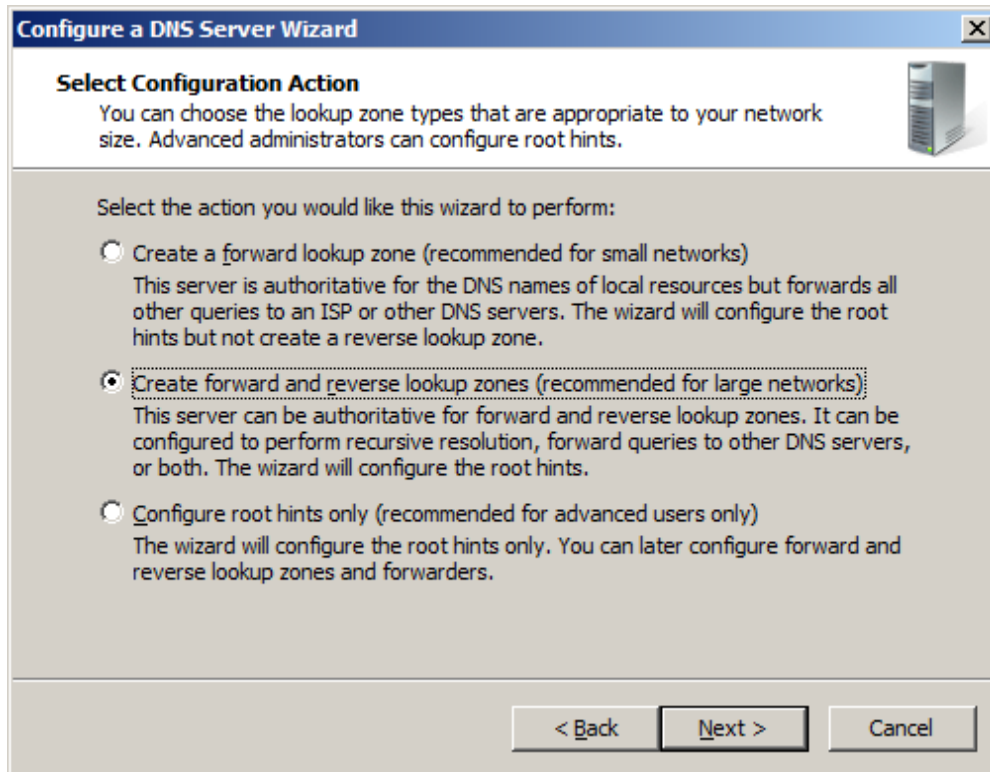
## Selezione Start DNS



Selezione Configure DNS Server:



Configure una zona y su correspondiente reverse lookup



Seleccione Primary Zone.

Ingrese un nombre para la zona.

**New Zone Wizard**

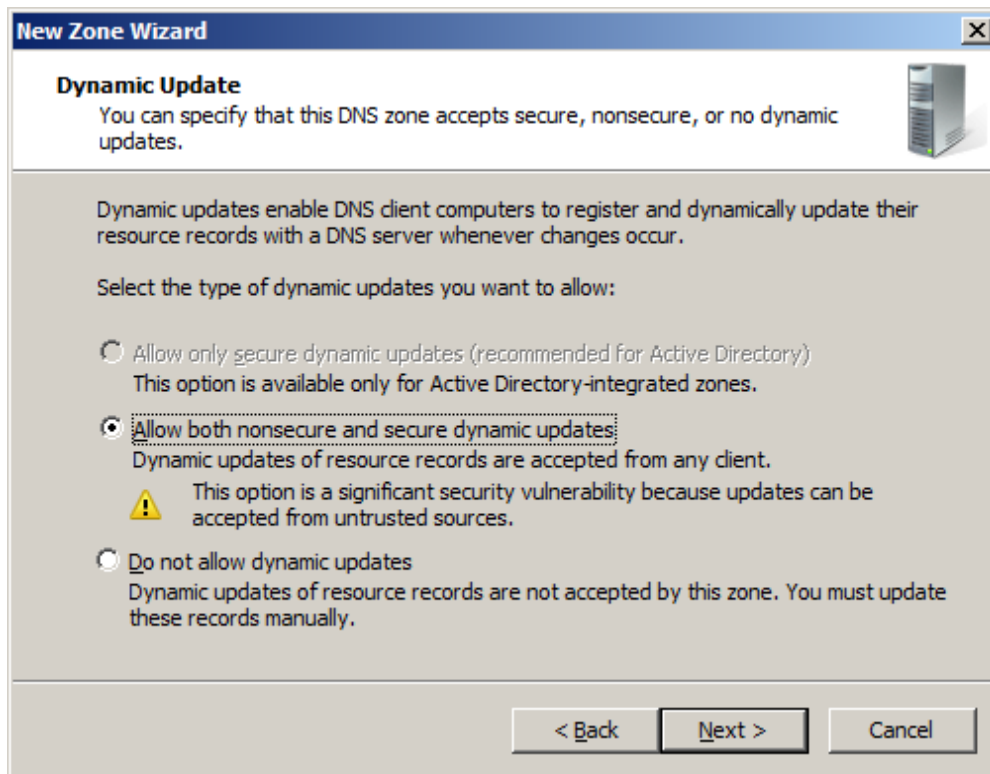
**Zone Name**  
What is the name of the new zone?

The zone name specifies the portion of the DNS namespace for which this server is authoritative. It might be your organization's domain name (for example, microsoft.com) or a portion of the domain name (for example, newzone.microsoft.com). The zone name is not the name of the DNS server.

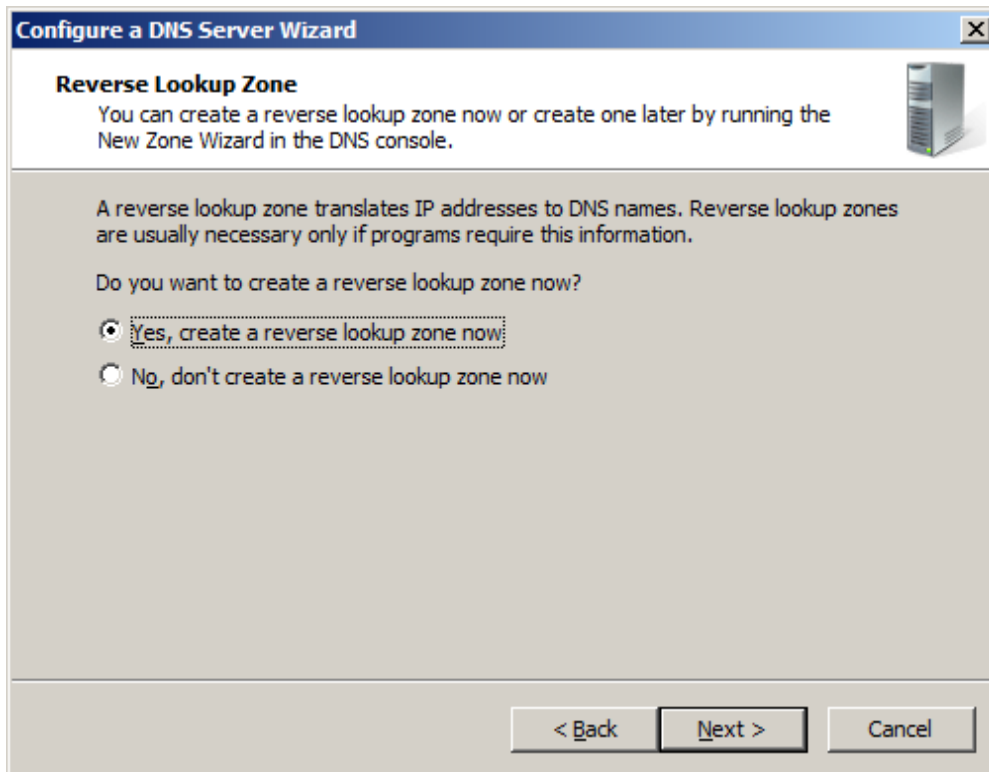
Zone name:  
demo.local

< Back   Next >   Cancel

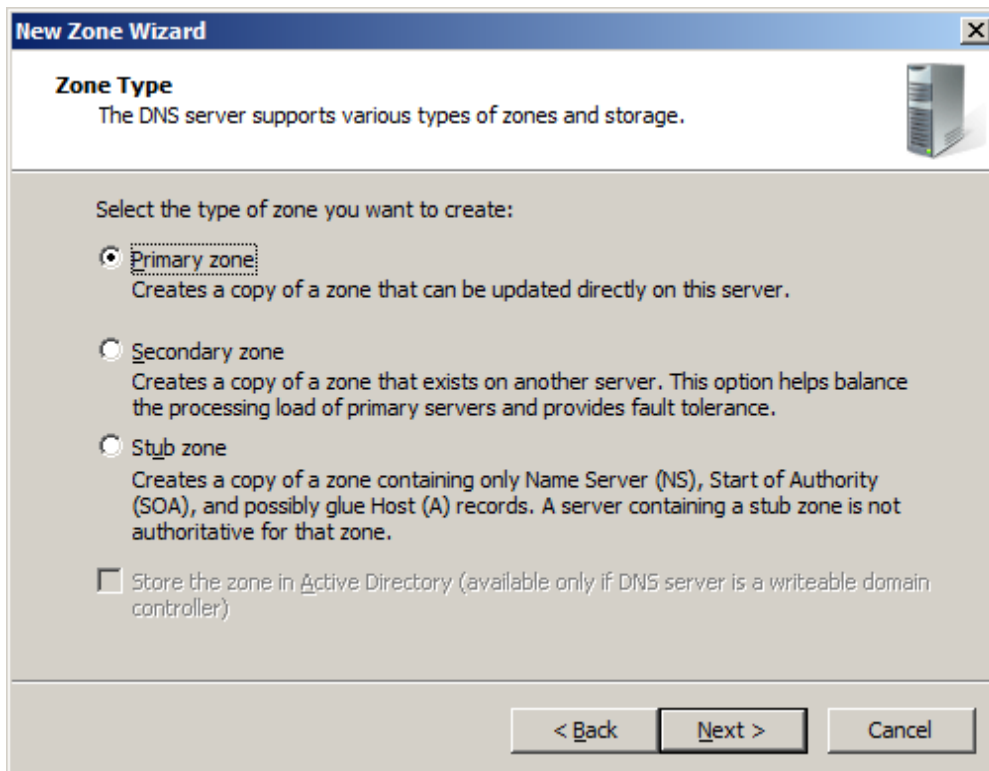
Seleccione Dynamic Updates



Confirme la creación de la zona de reverse lookup




Selezione Primary e IPV6 Reverse



**New Zone Wizard** [X]

**Reverse Lookup Zone Name**  
A reverse lookup zone translates IP addresses into DNS names.



Choose whether you want to create a reverse lookup zone for IPv4 addresses or IPv6 addresses.


IPv4 Reverse Lookup Zone

IPv6 Reverse Lookup Zone

< Back   Next >   Cancel

**New Zone Wizard** [X]

**Reverse Lookup Zone Name**  
A reverse lookup zone translates IP addresses into DNS names.



To name the reverse lookup zone, enter an IPv6 address prefix to auto generate the zone name(s). Depending on the prefix you enter, up to 8 zones may be created.

IPv6 Address Prefix:

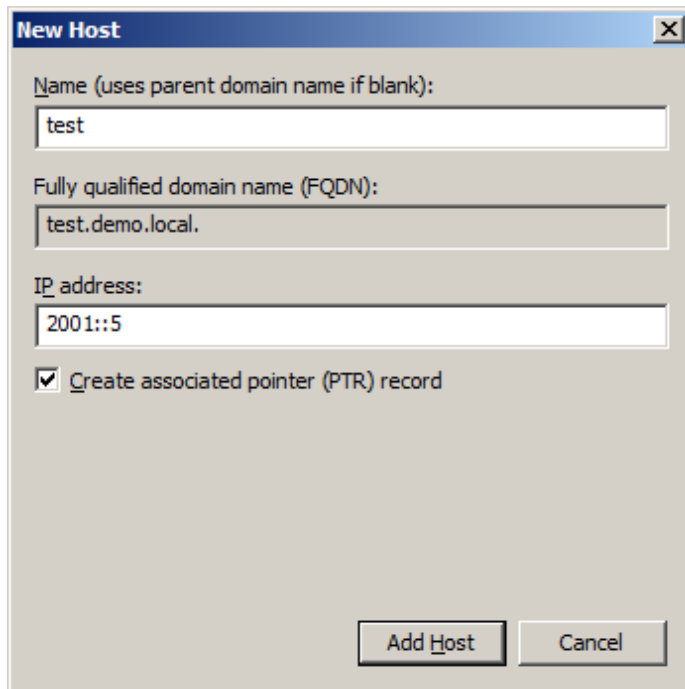
2001::/32

Reverse Lookup Zones

0.0.0.0.1.0.0.2.ip6.arpa

< Back   Next >   Cancel

Pruebe de explorar la interface del DNS, creando registros AAAA u otros.



**New Host** [X]

Name (uses parent domain name if blank):  
test

Fully qualified domain name (FQDN):  
test.demo.local.

IP address:  
2001::5

Create associated pointer (PTR) record

Add Host Cancel

### 3) Instalando el servicio de DHCP

Abra el server manager y agregue un nuevo rol. Servidor de DHCP


**Server Manager** [Window Title Bar]

File Action View Help [Menu Bar]

Server Manager (WIN-5FBZIMB8X1) [Tree View]

- Roles
- DNS Server
- Features
- Diagnostics
- Configuration
- Storage

### Roles

 View the health of the roles installed on your server and add or remove roles and features.

**Roles Summary** [Roles Summary Help](#)

**Roles:** 1 of 16 installed

- [DNS Server](#)


[Add Roles](#) [Remove Roles](#)

**DNS Server** [DNS Server Help](#)


Provides name resolution for TCP/IP networks.

**Role Status** [Go to DNS Server](#)

- Messages: None
- System Services: All Running
- [Events: 3 informational in the last 24 hours](#)

 Last Refresh: 7/6/2008 8:50:48 PM [Configure refresh](#)

**Add Roles Wizard** [X]

 **Select Server Roles**

**Before You Begin**

**Server Roles**

- DHCP Server
  - Network Connection Bindings
  - IPv4 DNS Settings
  - IPv4 WINS Settings
  - DHCP Scopes
  - DHCPv6 Stateless Mode
  - IPv6 DNS Settings
- Confirmation
- Progress
- Results

Select one or more roles to install on this server.

Roles:

- Active Directory Certificate Services
- Active Directory Domain Services
- Active Directory Federation Services
- Active Directory Lightweight Directory Services
- Active Directory Rights Management Services
- Application Server
- DHCP Server**
- DNS Server (Installed)
- Fax Server
- File Services
- Network Policy and Access Services
- Print Services
- Terminal Services
- UDDI Services
- Web Server (IIS)
- Windows Deployment Services

Description:

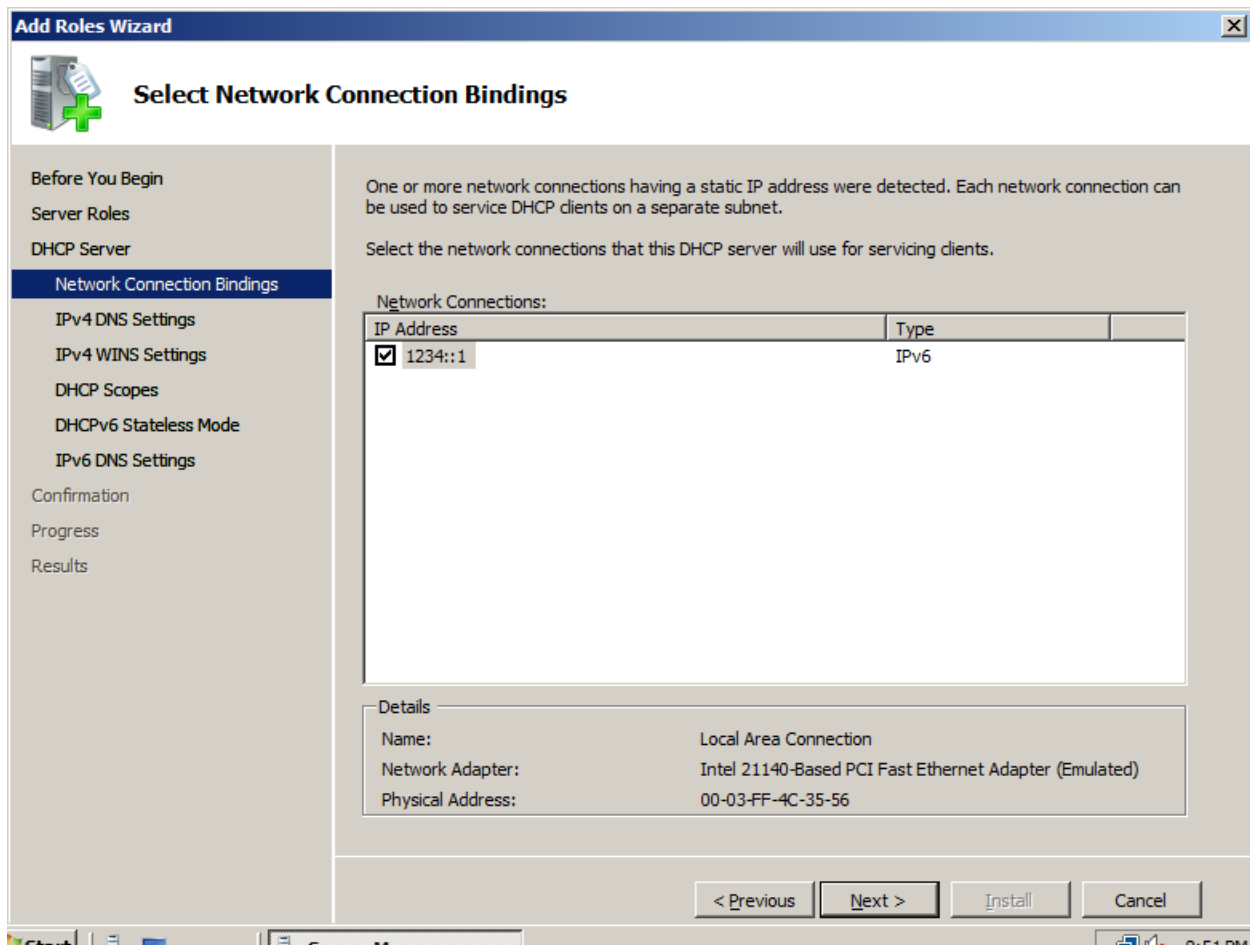
[Dynamic Host Configuration Protocol \(DHCP\) Server](#) enables you to centrally configure, manage, and provide temporary IP addresses and related information for client computers.

[More about server roles](#)

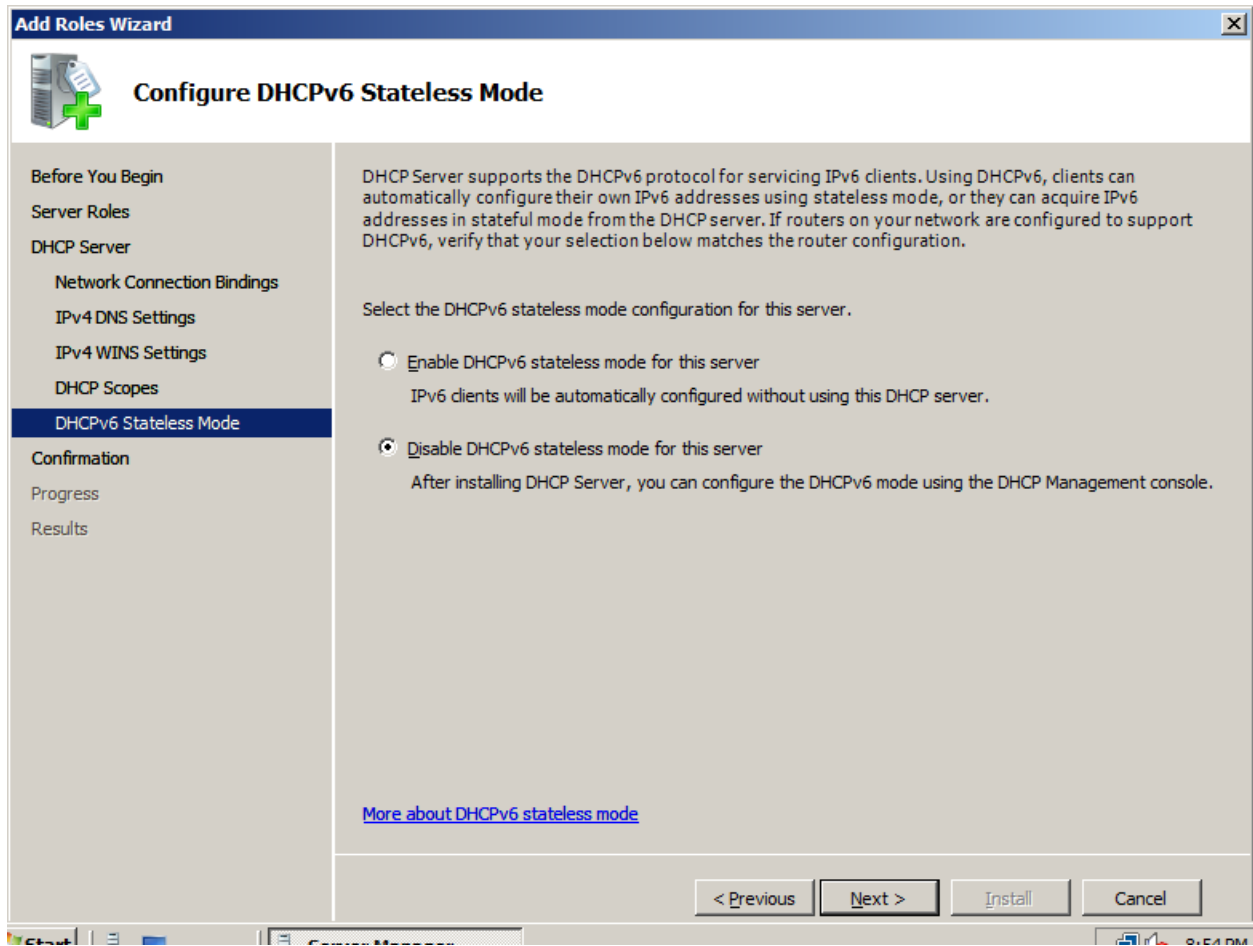
< Previous    Next >    Install    Cancel

Start    Server Manager    9:51 PM

Seleccione la interface de red que servirá el Servicio de DHCP.

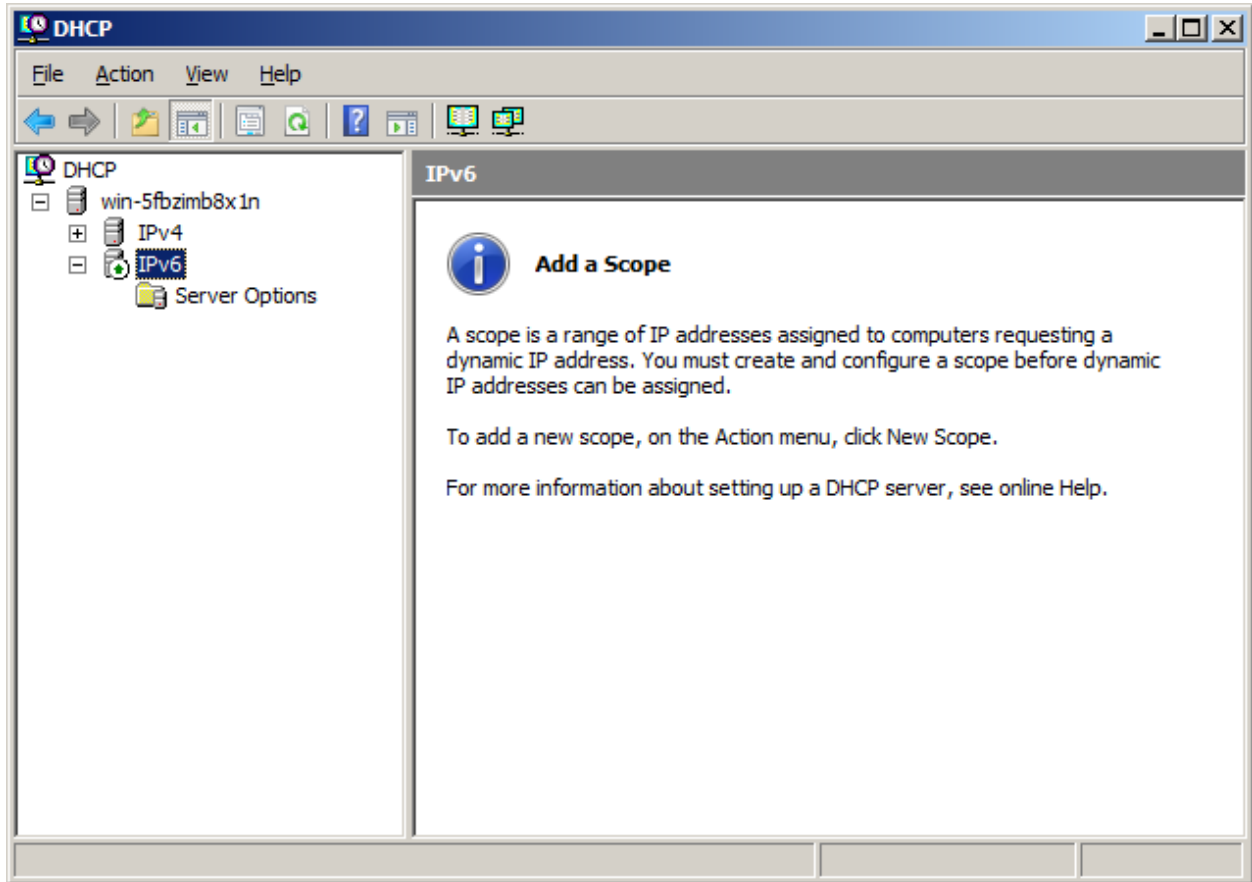


Configure la opción de dhcpV6 STATELESS MODE y deshabilite la misma.



Complete el asistente.


## Selezione Start DHCP



Agregue un Scope IPv6

**New Scope Wizard**

**Scope Name**  
You have to provide an identifying scope name. You also have the option of providing a description.



Type a name and description for this scope. This information helps you quickly identify how the scope is to be used on your network.

Name:

Description:

< Back   Next >   Cancel

Defina la red atendida

**New Scope Wizard**

**Scope Prefix**  
You have to provide a prefix to create the scope. You also have the option of providing a preference value for the scope.

Enter the IPv6 Prefix for the addresses that the scope distributes and the preference value for the scope.

Prefix  /64

Preference

< Back   Next >   Cancel

Agregue un rango de direcciones (scope)

**New Scope Wizard**

**Add Exclusions**  
Exclusions are addresses or a range of addresses that are not distributed by the server.

Type the IPv6 address range that you want to exclude for the given scope. If you want to exclude a single address, type an identifier in Start IPv6 Address only.

Start IPv6 Address: 1234::

End IPv6 Address: 1234::

Excluded address range:

1234::3 to 1234::99:0:0	<input type="button" value="Remove"/>
-------------------------	---------------------------------------

< Back    Next >    Cancel

Agregue la duración del Lease

**New Scope Wizard**

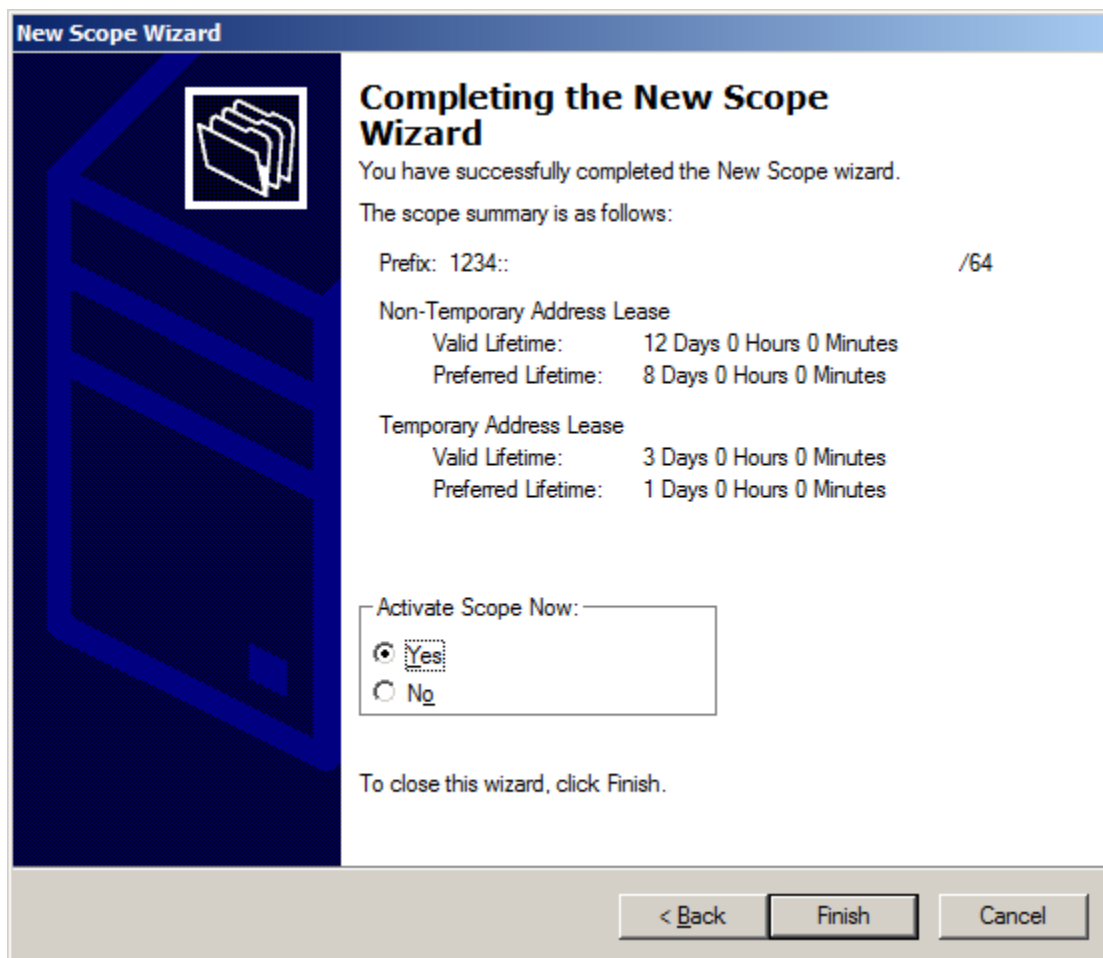
**Scope Lease**  
The lease duration specifies how long a client can use an IPv6 address obtained from this scope.

Lease durations should typically be equal to the average time the computer is connected to the same physical network.

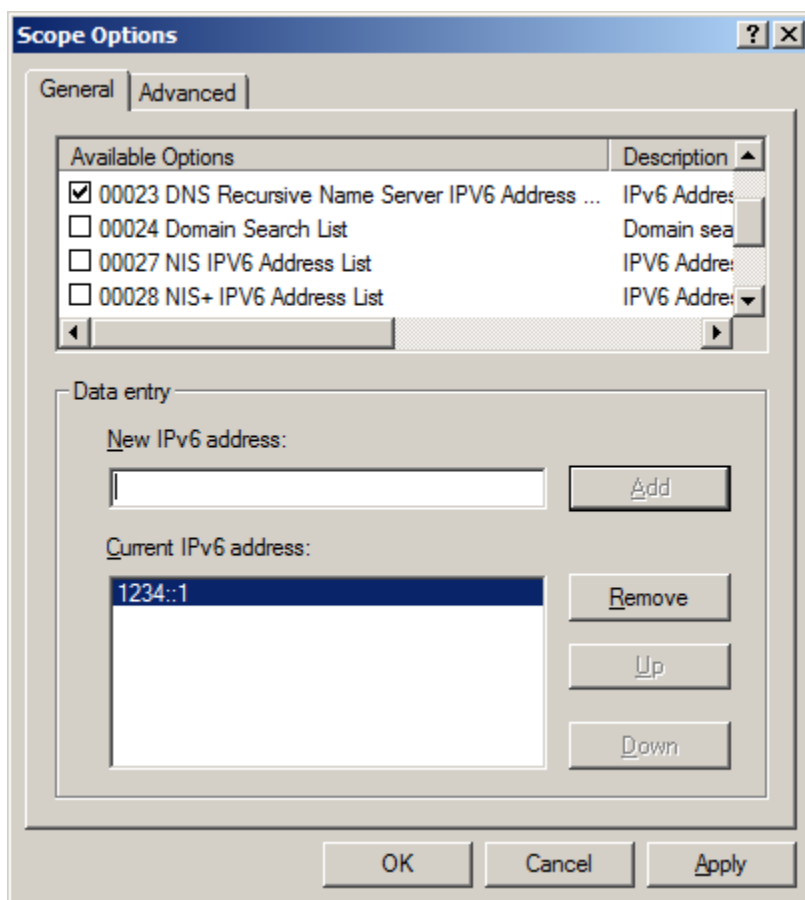
Non Temporary Address(IANA)			Temporary Address(IATA)		
Preferred Life Time			Preferred Life Time		
Days:	Hours:	Minutes:	Days:	Hours:	Minutes:
8	0	0	1	0	0
Valid Life Time			Valid Life Time		
Days:	Hours:	Minutes:	Days:	Hours:	Minutes:
12	0	0	3	0	0

< Back   Next >   Cancel

Finalmente complete la configuración sin activar el scope.

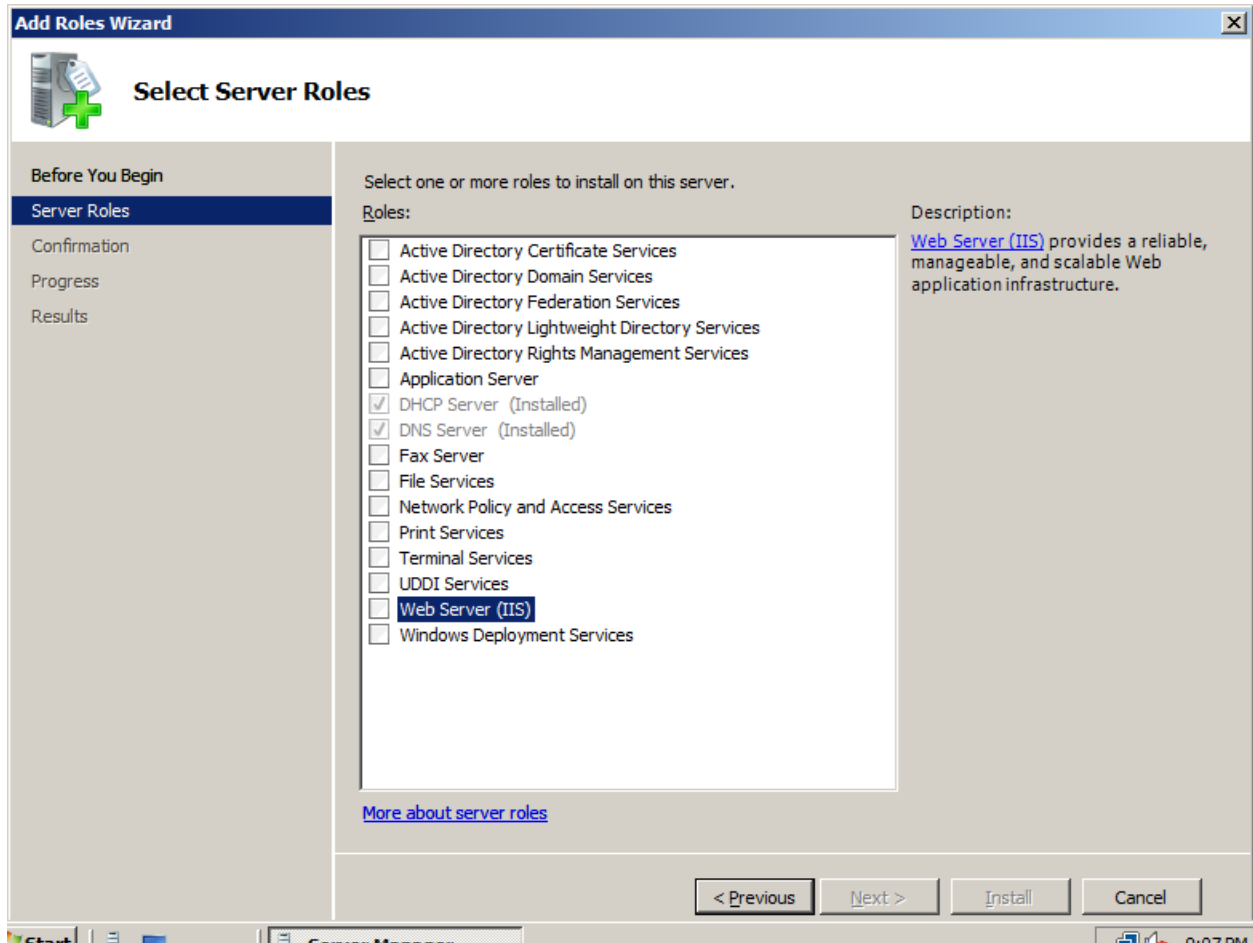


En las opciones del Scope, configure algunos parámetros adicionales, tales como el servidor DNS.

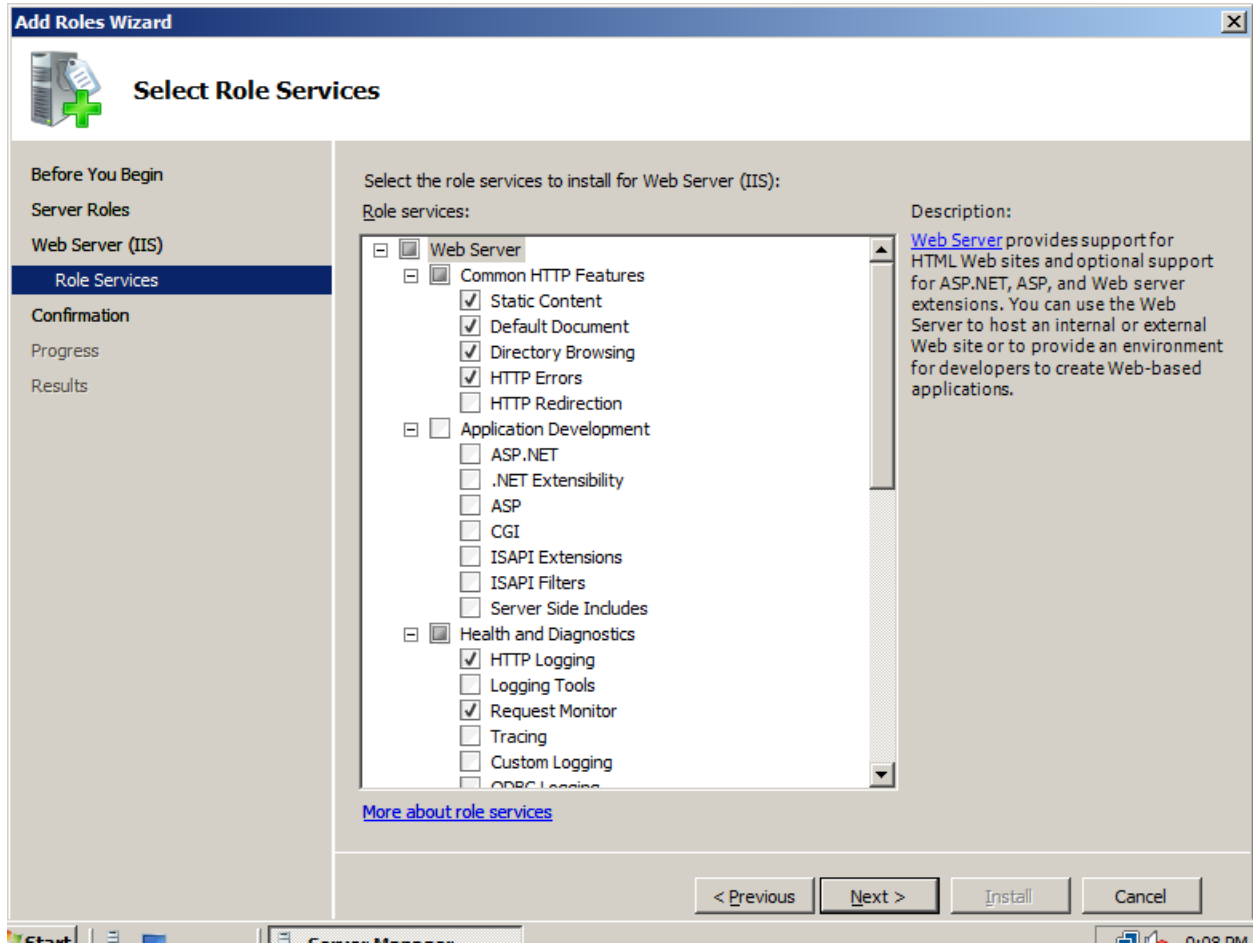


#### 4) Instalación del Servidor WEB

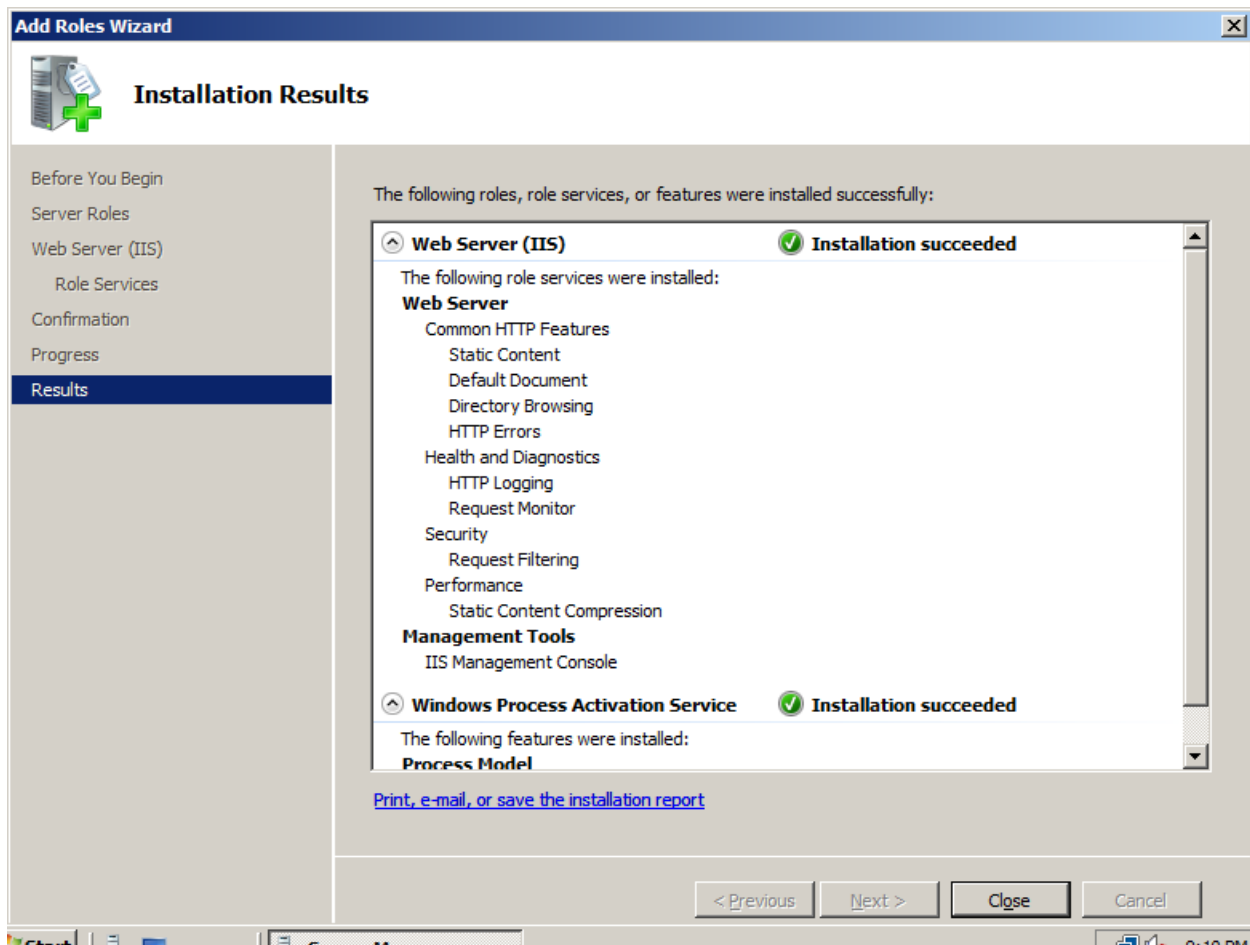
Abra el server manager y agregue el rol del Web Server.



Instale las características (features) adicionales que solicite el servidor.



Verifique la instalación y el funcionamiento del servicio.



Abra el Internet Information Server Service Manager.

